

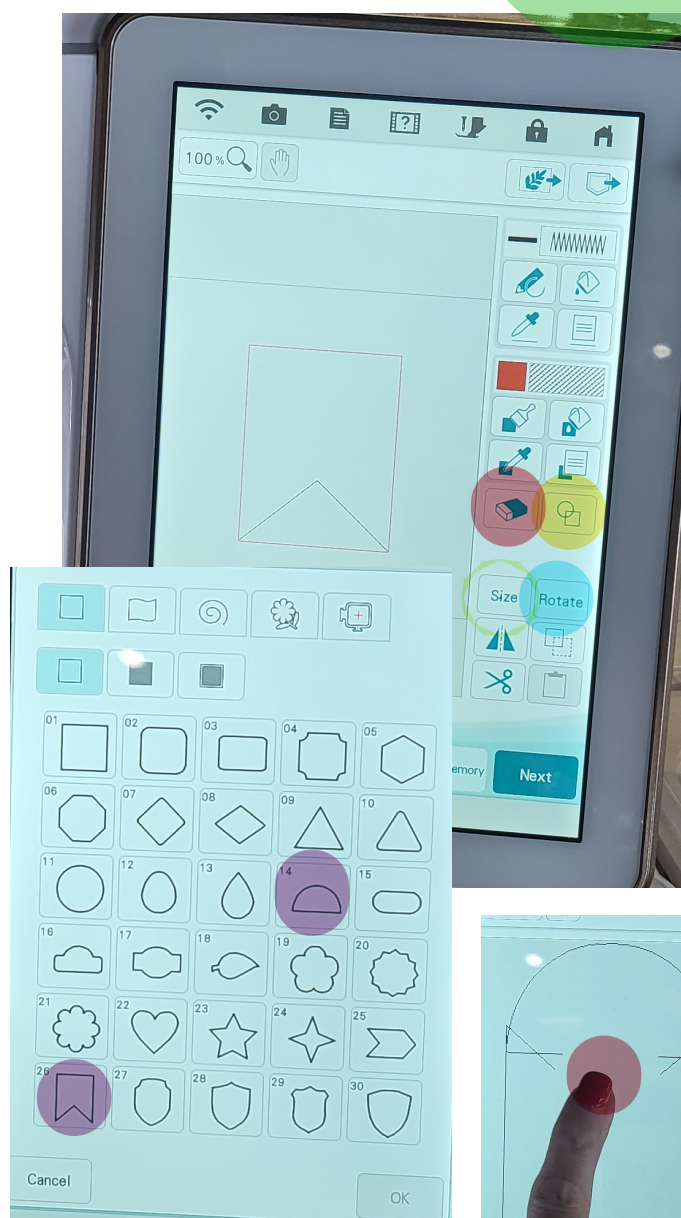
Ghost Pillow

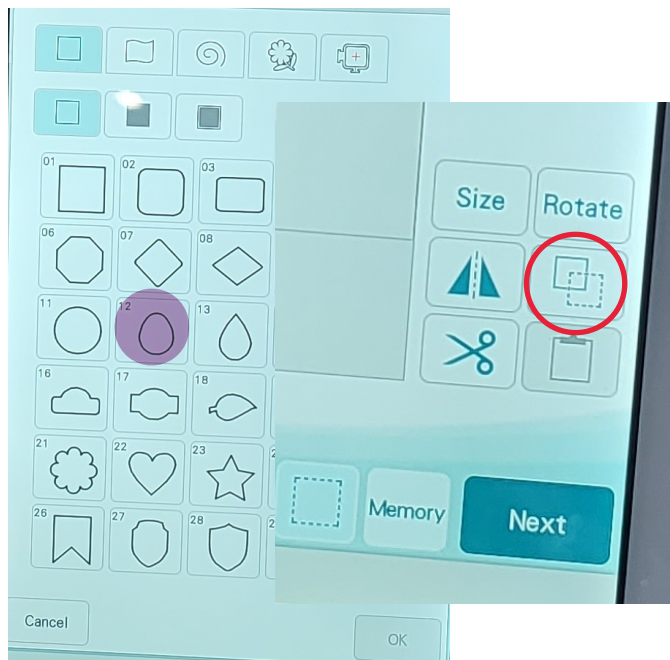
IQ Designer Instructions

by Janice Kinsey and Kailen Kinsey

As Seen On
New @ 2!

1. Open IQ Designer on your Baby Lock Solaris Vision.
2. Select the **Shape Tool**. Choose the **Ribbon Shape (26)**. Select OK.
3. Select **Rotate**. Rotate 180 degrees by hitting the 90 degree turn button twice. Select OK.
4. Select **Size**. Reduce to 1.85 inches wide. Select OK.
5. Select the **Shape Tool**. Choose the **Half Circle (14)**. Select OK.
6. Select **Size**. Reduce to 1.85 inches wide. Select OK.
7. Move the Half Circle to the top of the Ribbon.
8. Select the **Eraser Tool**. Erase the interior lines from the Shapes. Select OK.





9. Select the Shape Tool. Select the Egg Shape (12). Select OK.

10. Select Rotate. Rotate 180 degrees by hitting the 90 degree turn button twice. Select OK.

11. Select Size. Reduce to .25 (1/4) inches wide.

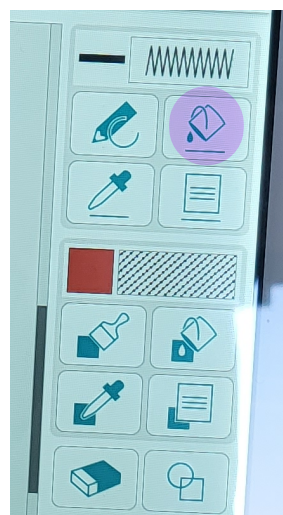
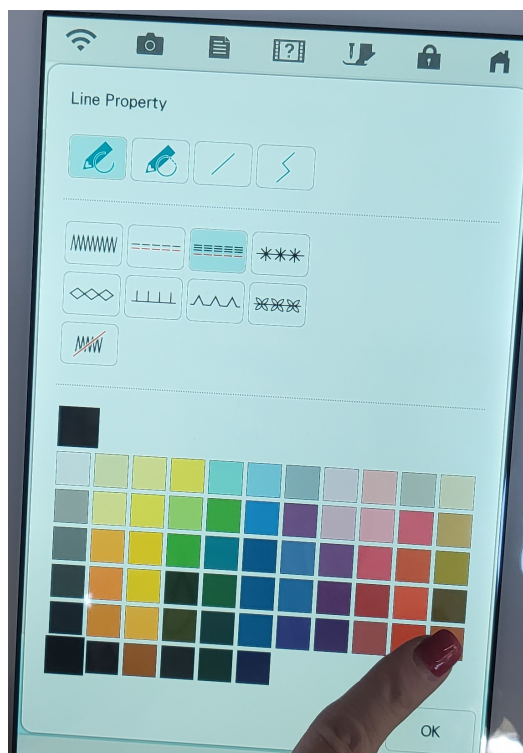
12. Move the first eye into desired position.

13. Select the Copy/Paste Tool

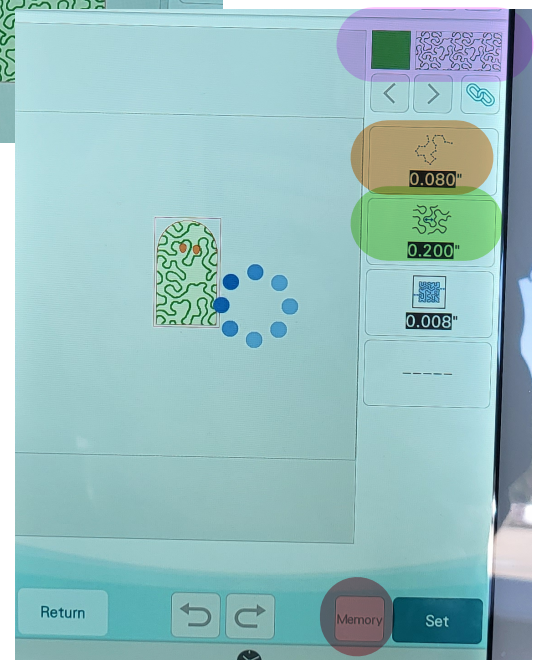
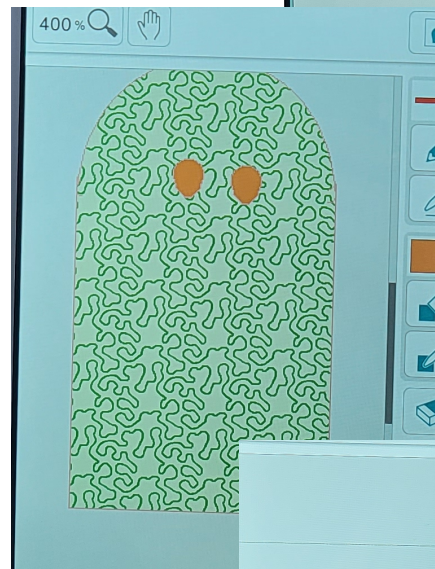
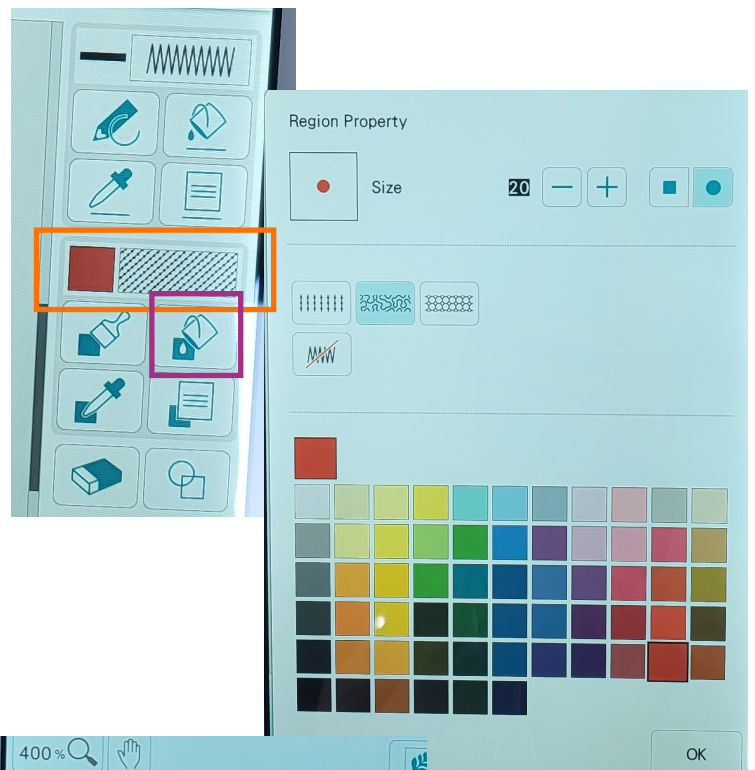
14. Move the second eye into desired position.

15. Select Line Properties. Select Bean Stitch. Select Red. Select OK.

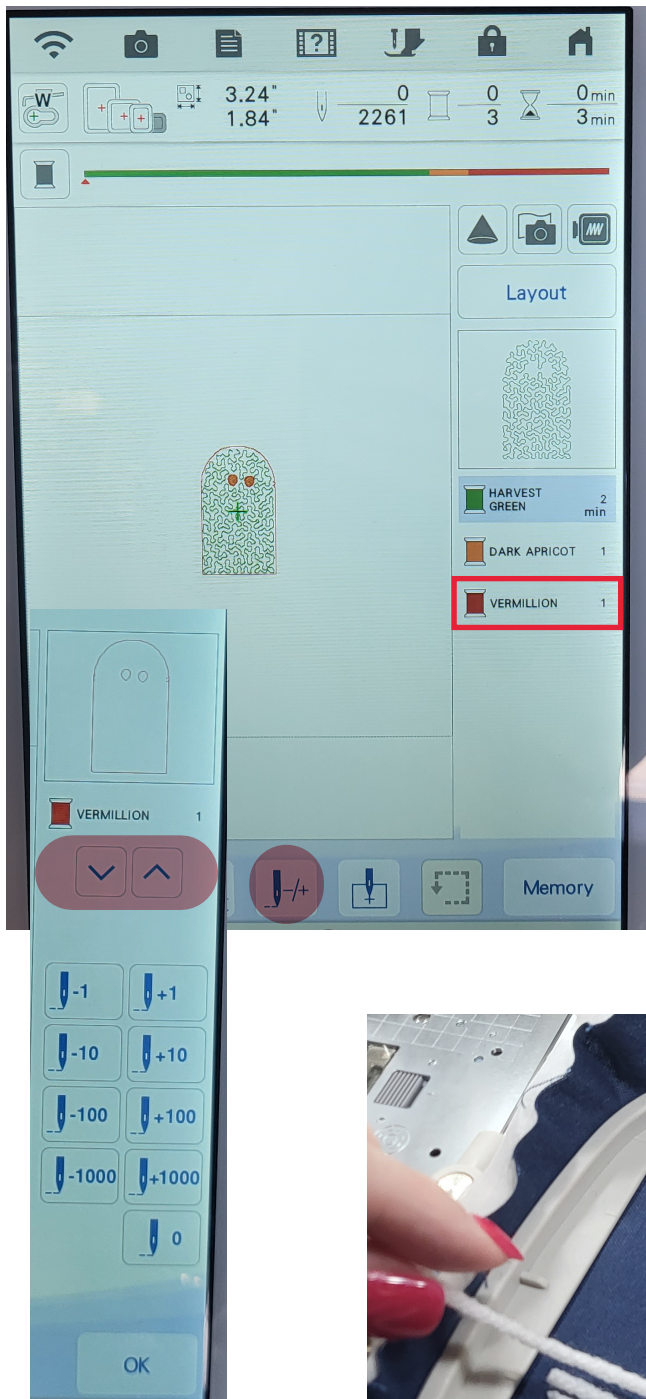
16. Select the Line Fill Tool. Tap the ghost outline and two eye outlines to convert them to Red Bean Stitching.



17. Select **Region Properties**.
Select Stippling. Select Green.
Select OK.
18. Select the **Region Fill Tool**.
Tap the Ghost interior to fill with
Green Stippling.
19. Select **Region Properties**.
Select Fill. Select Orange. Select
OK.
20. Select the **Region Fill Tool**.
Tap inside both eyes to fill with
Orange Fill Stitches. Select Next.
21. Select the **Stippling Settings**.
22. Select **Run Pitch**. Change to
0.040 inches. Select OK.
23. Select **Spacing**. Change to
0.100 inches. Select OK.
24. Save Design to **Machine
Memory**. Select Set. Select OK.
25. Select Embroidery.



Embroidery Instructions



1. Select Needle (+/-). Move ahead to **Red Outline Step**. Select OK.
2. Hoop desired fabric in desired hoop. (4"x4" minimum required)
3. Thread machine with White Embroidery Thread.
4. Stitch out the Red Ghost Outline.
5. Cut a piece of Quilter's Select Appli-Stick to Ghost Outline Shape.
6. Fuse Appli-Stick over Ghost Outline with Iron.
7. Peel backing from Appli-Stick.
8. Apply yarn in rainbow style arcs onto Appli-Stick. Trim along bottom edge, leaving 1/2" tails hanging below Ghost Outline.



9. In Settings, adjust **Embroidery Foot Height** to 0.100 inches. (Or higher if using thicker yarn.) Select OK.

10. Select **Needle (+/-)**. Move back to start of Red Outline Step. Select OK.

11. Hold Ghost Tails down and run Red Outline Step.

12. Select **Needle (+/-)**. Move back to Green Stippling Step. Select OK.

13. Stitch out the Green Stippling Step.

14. Thread machine with Black Embroidery Thread.

15. Stitch out Orange Ghost Eyes Step. (Repeat step if more density desired.)

16. Use fingers to fluff up bottom edge of yarn tails.

17. Enjoy your Ghost!

