

BABY LOCK SEWING ACCESSORIES

Braiding Foot

(BLQ2-BF)

Instructions

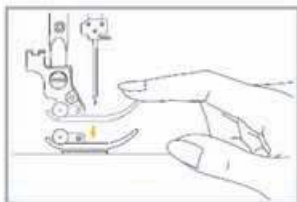
Used for both couching and stitching, this Braiding Foot allows for greater flexibility in attaching braid, cord, or elastic cord.



INSTRUCTIONS:

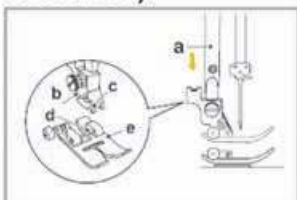
Removing the presser foot

Raise the presser foot (a).



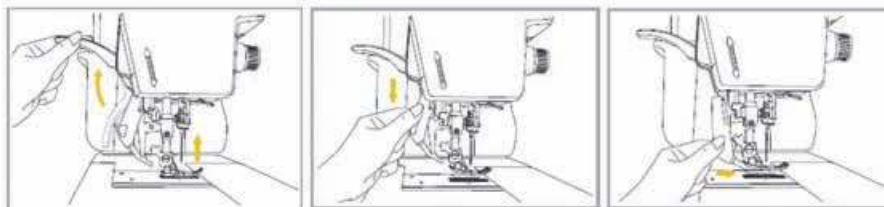
Attaching the presser foot

Lower the presser foot holder (b) until the notch (c) is directly above the pin (d). Lower the presser foot holder (b) and the presser foot (e) will engage automatically.



The Precision Dual-Feed Quilting System (PDQ) feeds the fabric from the top and bottom simultaneously to ensure matching of the fabric layers, used for quilting layers of fabric and batting, and when matching checked, striped or plaid fabrics.

To Activate and Deactivate the Precision Dual-Feed Quilting System (PDQ)



To activate the PDQ system, raise the presser foot. Lower the PDQ mechanism slowly and swing the PDQ mechanism forward under the back of the presser foot until it is engaged and stays in the system. To deactivate the PDQ system, raise the presser foot, pull down on the mechanism and swing it to the rear then raise the PDQ up.



FOR THE LOVE OF SEWING

1. Remove the presser foot.
2. Attach the Braiding Foot and engage the PDQ.
3. Select a zigzag stitch. The width of the zigzag should be just slightly wider than the braid, cord that you are using.
4. Insert the braid or cord you are working with through the wire guide on the front of the foot, feeding it into the circular hole in the base of the foot so that the braid or cording passes through the channel on the underside of the foot.



FOR THE LOVE OF SEWING

800-422-2952

www.babylock.com